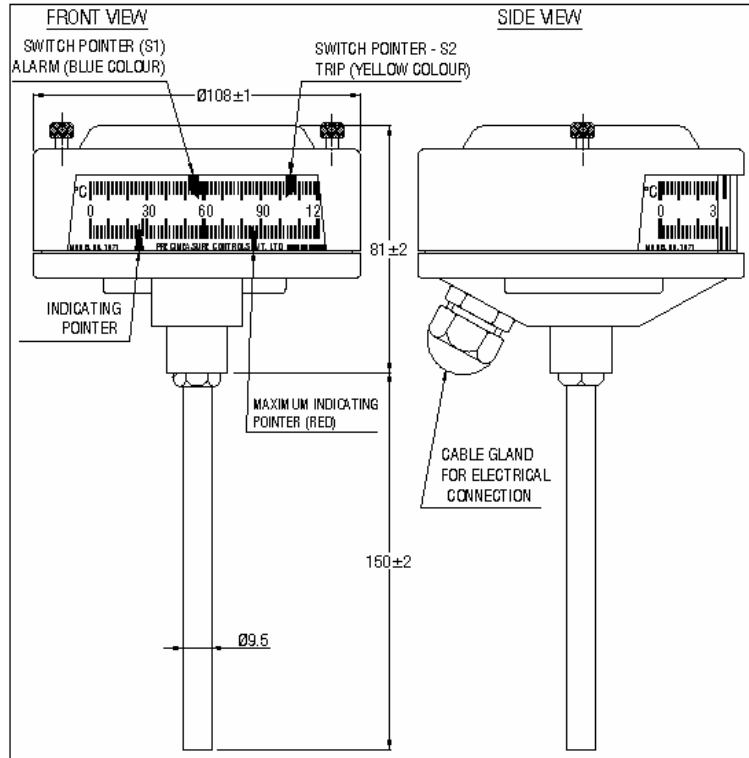


**Model 1071 (With Contact)**

**Overall Dimension Drawing:**



**Indicating Dial:**

Dimension	Segment Dial
Angular Sweep	105°
Range	0-120°C
Accuracy	±3°C Between 40°C & 110°C
Graduation	2°C per division

<u>Instrument Case</u>	Weatherproof PDC Aluminum Alloy Casing with Light Gray color Powder Coated at all sides. Suitable for outdoor mounting - Protective Class IP55 as per IEC 60529.
------------------------	--

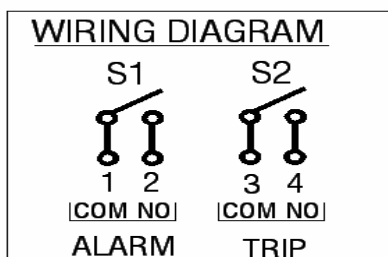
**Switch Configurations:**

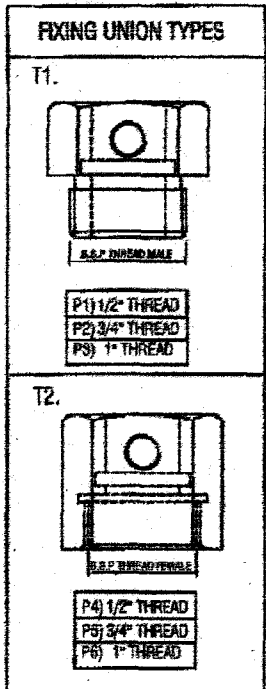
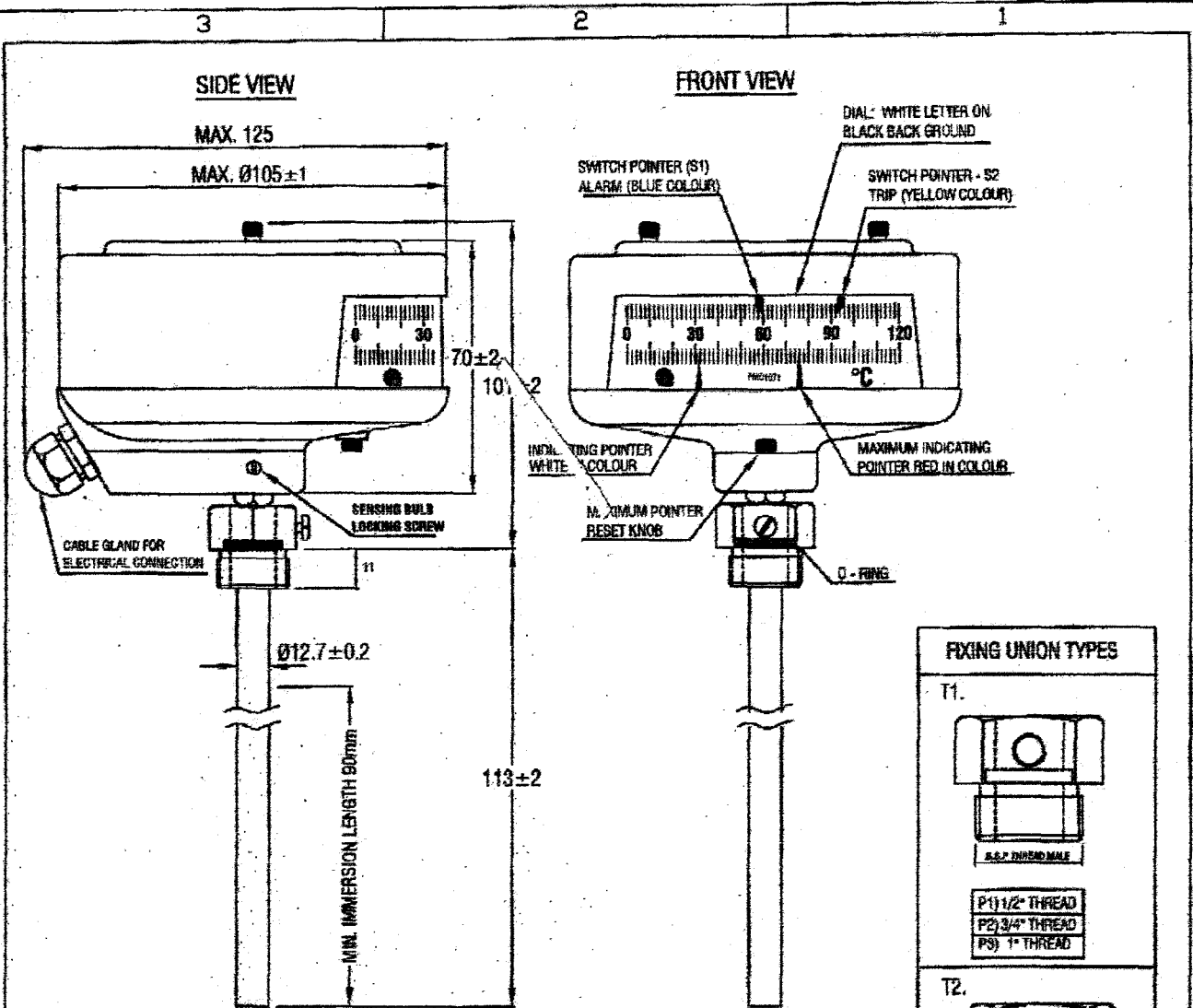
Maximum Number of Switches	2
Switch Type	Heavy Duty Micro Switch
Switch Rating	5A at 240V AC
Switches	Normally Open Type
Adjustable Range	40 – 110°C
Switch Accuracy	±3°C of Set Value
Contact Type	Switch Contacts are Potential Free

**Electrical Connections:**

Cable Gland Size	4 – 10mm
All Line to Body (Earth) High Voltage Breakdown Tested	2 KV AC, 50 Hz. for 60 seconds

**Wiring Diagram:**

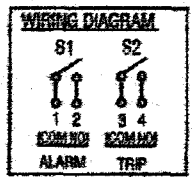




**ORIGINAL  
IF IN RED**

DIAL : SEGMENT DIAL ANGULAR SWEEP 105°  
 RANGE : 0-120°C  
 ACCURACY : ±4°C BETWEEN 40°C TO 110°C  
 PROTECTION DEGREE : IP55 - OUTDOOR MOUNTING  
 CASE : ALUMINUM  
 FINISH : POWDER COATED LIGHT GRAY (IS831)

NO. OF CONTACTS : 2  
 MICRO SWITCH RATING: 5A-240V AC / 0.25A-220V DC  
 SWITCH ADJUSTABLE RANGE: 20°C TO 105°C  
 CABLE GLAND CLAMPING RANGE: 4.0mm TO 10mm



*GEN. NOTE: SHARP EDGES NOT ALLOWED.		TOLERANCE MEDIUM IS : 2102		MATERIAL: AS ABOVE	
		ALL DIMENSIONS ARE IN MILLIMETRES UNLESS OTHERWISE STATED		FINISH: AS ABOVE	
		<b>PRECIMEASURE CONTROLS PVT. LTD.</b>		PREPARED	DIHANKAY 14.05.08
				CHECKED	[Signature] 14/5/08
REV.No.	ZONE	BRIEF RECORD	DATE	APPROVED	[Signature] 14/5/08
SCALE: N.T.S.		TITLE: OVERALL DIMENSIONS FOR TEMPERATURE INDICATOR & CONTROLLER (STEM Ø12.7, LENGTH 113mm) (MODEL : 1071)			
		DRAWING NO. : 3228			QTY./UNIT
		SUPERSEDES :			1 No.