

LC-WD-5X-DC-ZT

SOLAR GARDEN LIGHT

LED LAMP	8W LED POWER	22W SOLAR PANEL	IP65	DIE-CAST ALUMINIUM MATERIAL	BLACK COLOR	Monocrystal SOLAR TYPE	SOLAR LAMP
--------------------	------------------------	---------------------------	-------------	------------------------------------	--------------------	----------------------------------	-------------------

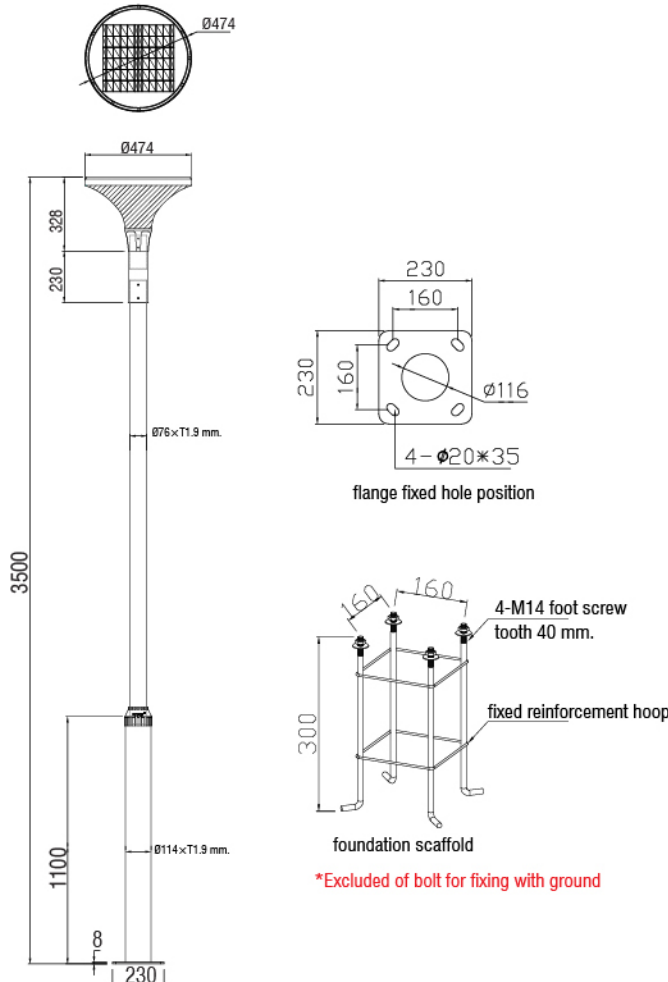


SOLAR PANEL	
TYPE	MONOCRYSTALLINE SILICON SOLAR CELLS
MATERIAL	SILICON
POWER EFFICIENCY	17%- 20%
LIFETIME	25year+

SPECIFICATION

Model	: LC-WD-5X-DC-ZT
Light source	: LED
Solar Panel	: 22W 5V Monocrystalline Solar
LED Power	: 8W
Lumen	: 960 lm
CCT	: 3000K
Beam Angle	: 140°
Battery	: 3.2V 15Ah lithium battery
Charging Time	: 3-5 Hours
Working Time	: 8 Hours
Discharging Time	: 3-4 Days
Material	: (Lamp) Die Casting Aluminum+Frosty PMMA (Pole) Galvanized steel
Color	: Black
Paint method	: Outdoor UV Spray Powder
Diffuser	: PMMA Frosted Acrylic
Adjustable	: -
IP	: 65
Dimension	: Lamp head $\varnothing 474 \times H328$ mm.
Total Height	: Total H : 3500 mm.

DIMENSION (Unit mm.)



UNIT PRICE : xxxx